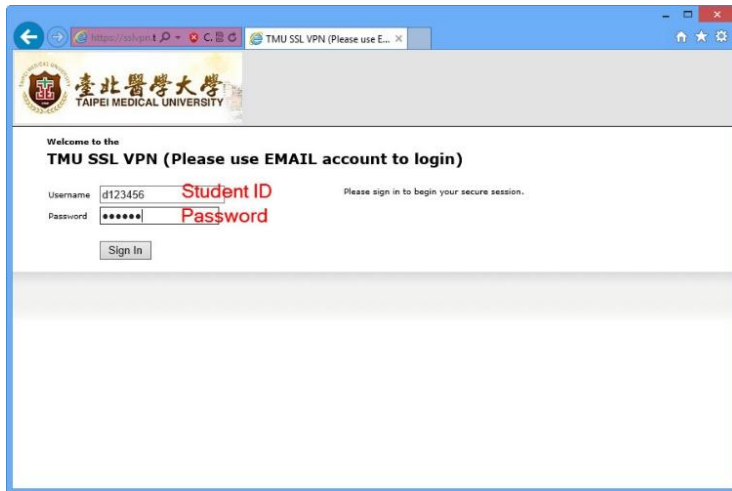


# VPN Connection SETTING

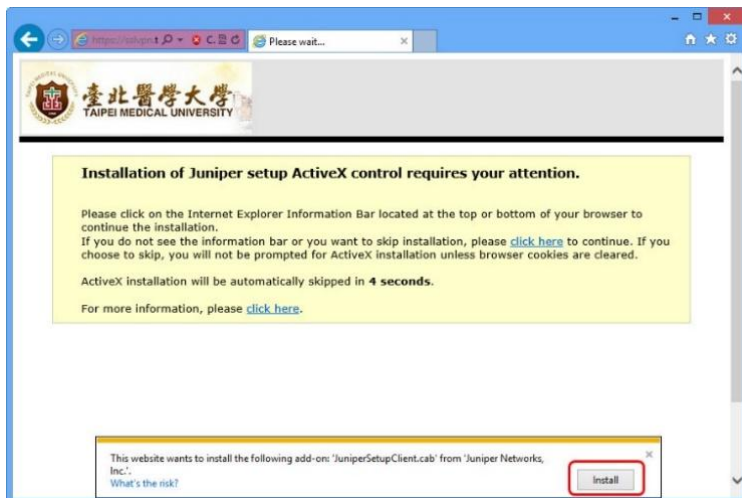
## Step 1.

Enter the following URL in Internet Explorer browser: <http://sslvpn.tmu.edu.tw>.  
Enter your Student id and Password to login.



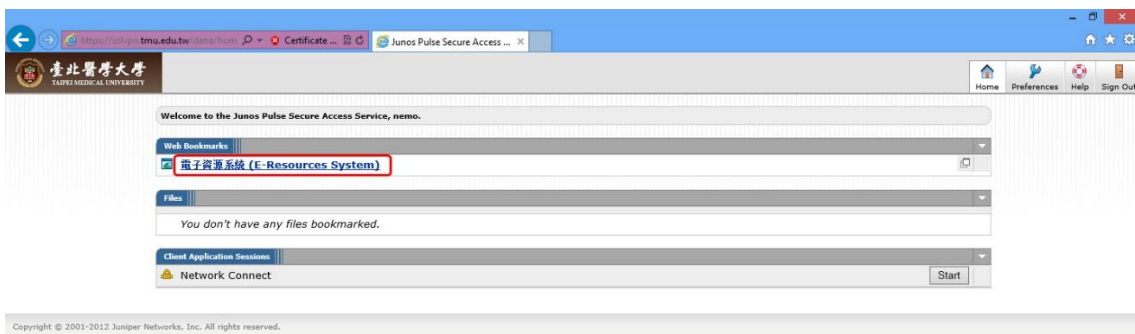
## Step 2.

A bar appears underneath the navigate portion of the Internet Explorer window asking if you wish to allow an ActiveX add-on to be downloaded. Click "**Install**" to download the ActiveX add-on.



## Step 3.

If you want to use the library resource, click "E-Resources System" to proceed.



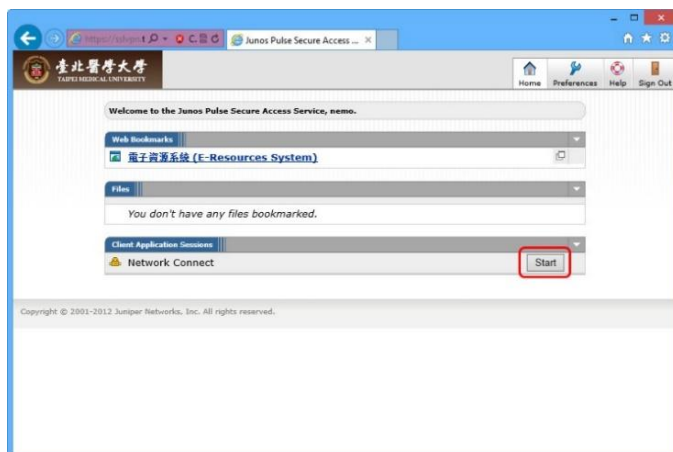
## Step 4.

Enter your Student id and Password to login the library E-Resources System.



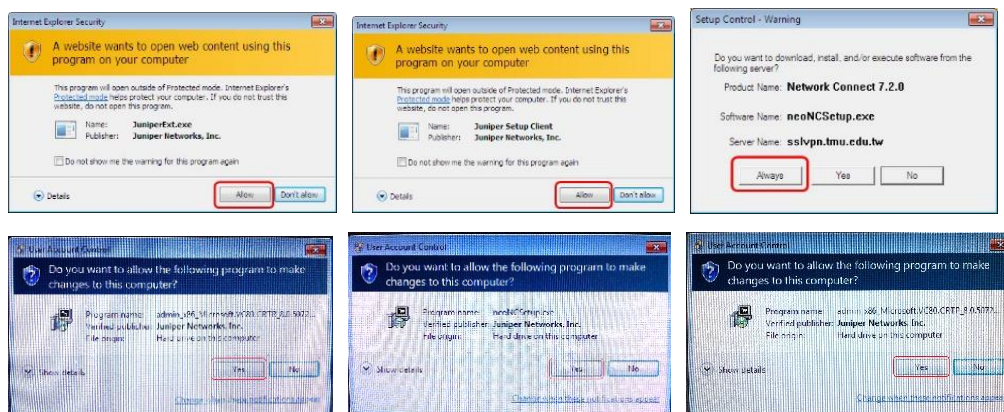
## Step 5.

If you want connect to TMU VPN Network, Click **Start** to proceed.




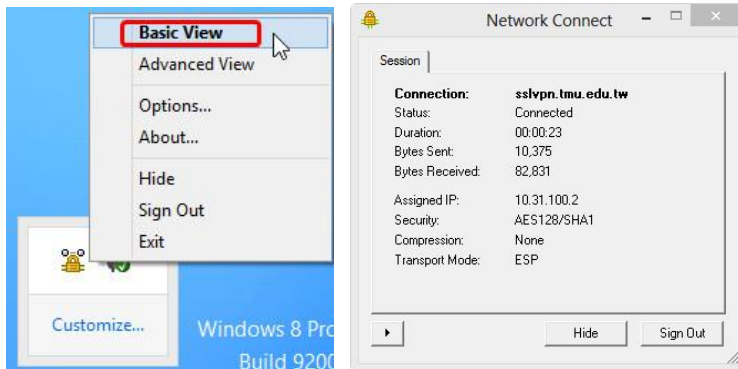
## Step 6.

A Security window opens asking you to confirm the changes. Click **“Allow”**、**“Yes”** or **“Always”** on each warning popup .You may be prompted three or six times during the installation process.

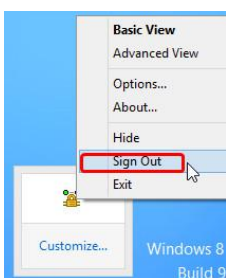


## Step 7.

Once connected, the Network Connect icon  should appear in the task tray. You can **right-click** this icon to display options. Right-click the Network Connect icon and chose **Basic View** to see your VPN connection.



You can also disconnect from the VPN here by clicking Sign Out.



Once you have installed the Network Connect VPN client, you can launch the client by clicking on the **Network Connect** icon from the Juniper Networks Primary Menu. Then enter your Student id and Password to login.

