

Set up PDF Security

Taipei Medical University Library



About upload thesis/dissertation

■ Upload ONE PDF file ONLY.

- If your thesis is separated into more than 2 WORD files, please save them as PDF format one by one, and then use PDF editor software to merge them.

■ Necessary documents for your thesis/dissertation

- 1) Cover
- 2) Graduate Thesis Certification
- 3) Application for Embargo of Thesis/Dissertation
(required only by whom need to postpone the publication)
- 4) Your thesis / dissertation

Note:

Please make sure the title of your thesis/dissertation in all documents (mentioned above) are the SAME.

Download PDF editor(PDFill)

- 1) Visit the [website of PDFill](#)
 - 2) Click on "CNET Editors Rating" in the upper right
 - 3) Download & install the software
- *Select "FREE PDFill PDF and Image Writer (No Watermark)" while selecting PDFill products that you want to install.



New PDFill PDF Editor 14

Free PDF Editor Basic, Free PDF Tools & Free PDF Writer



Free Technical Support and Free Upgrade!

PDF Editor Pro
Buy Pro at \$19.99
Free PDF Editor
Free PDF Tools
Free PDF Writer
Free Image Writer
Download

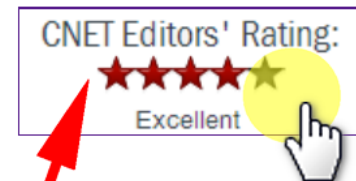
PDFill FREE PDF Tools

The World's Most Powerful
FREE PDF Tools



[PDFill 15.0 is ready for Beta Testing!](#)

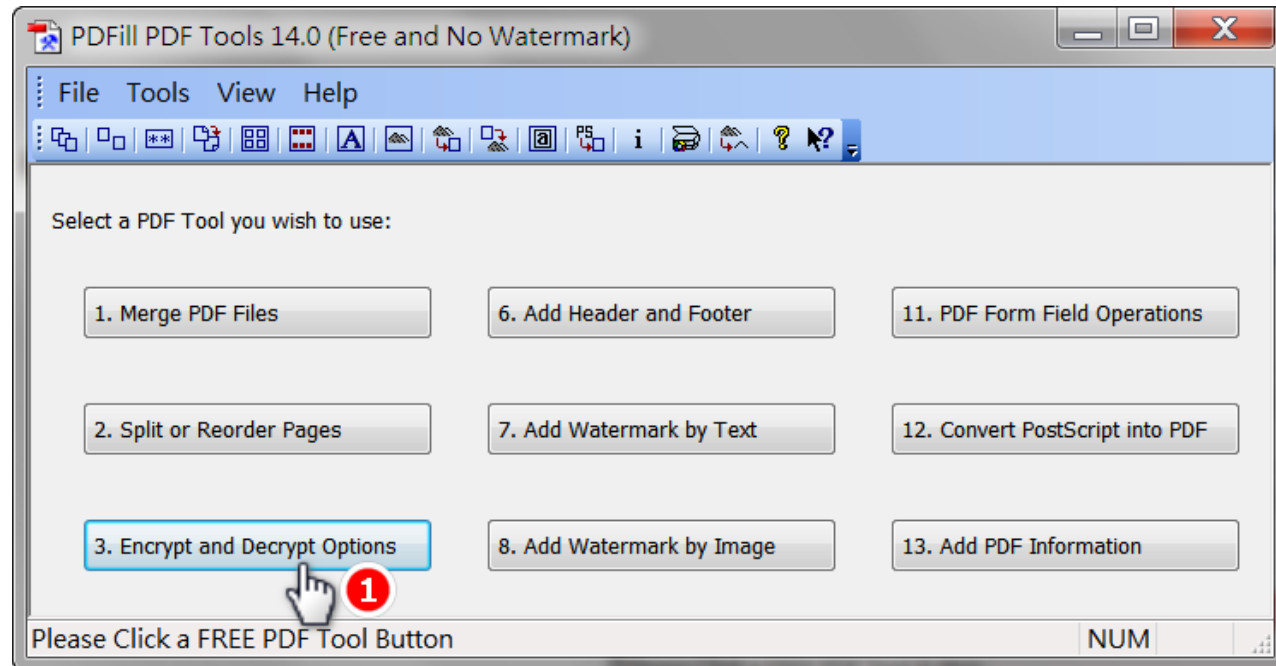
[FreePDF.net: Free PDF Editor Online Tools](#)



How to set up PDF security -1

1) Click on the button #3

3. Encrypt and Decrypt Options

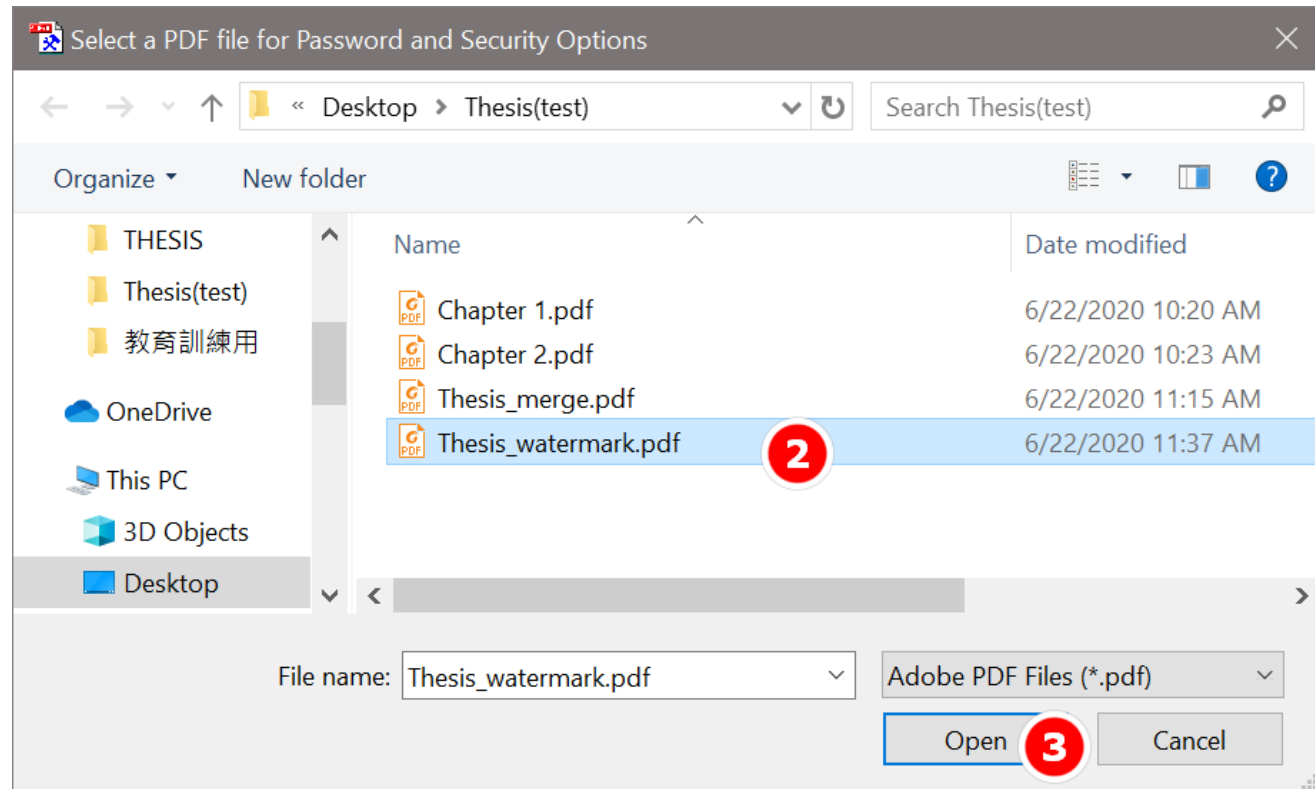


How to set up PDF security -2

2) Select a PDF file with TMU watermark

3) Click

Open



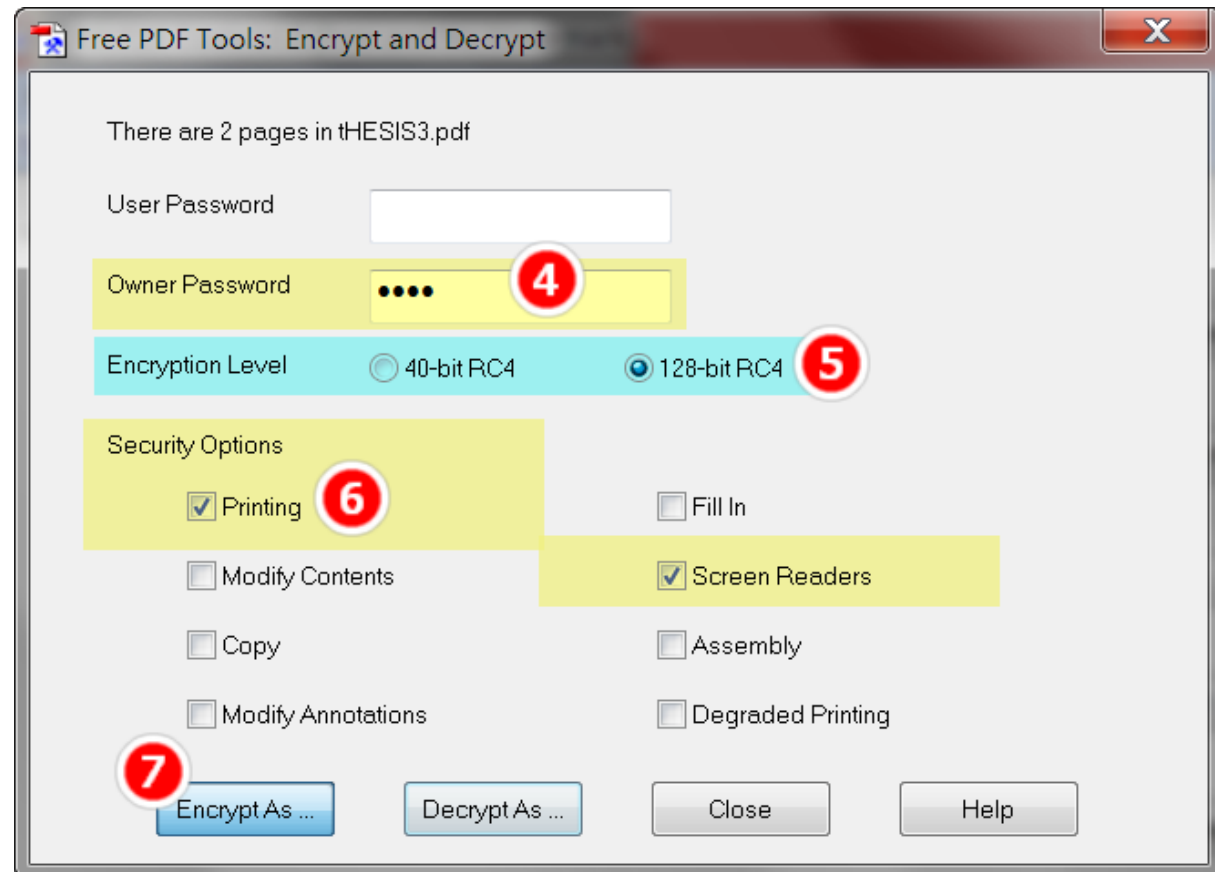
How to set up PDF security -3

4) Setup the password in “Owner Password” field

5) Encryption Level: 128-bit

6) Security Options: only mark “Printing” and “Screen Readers”

7) Click

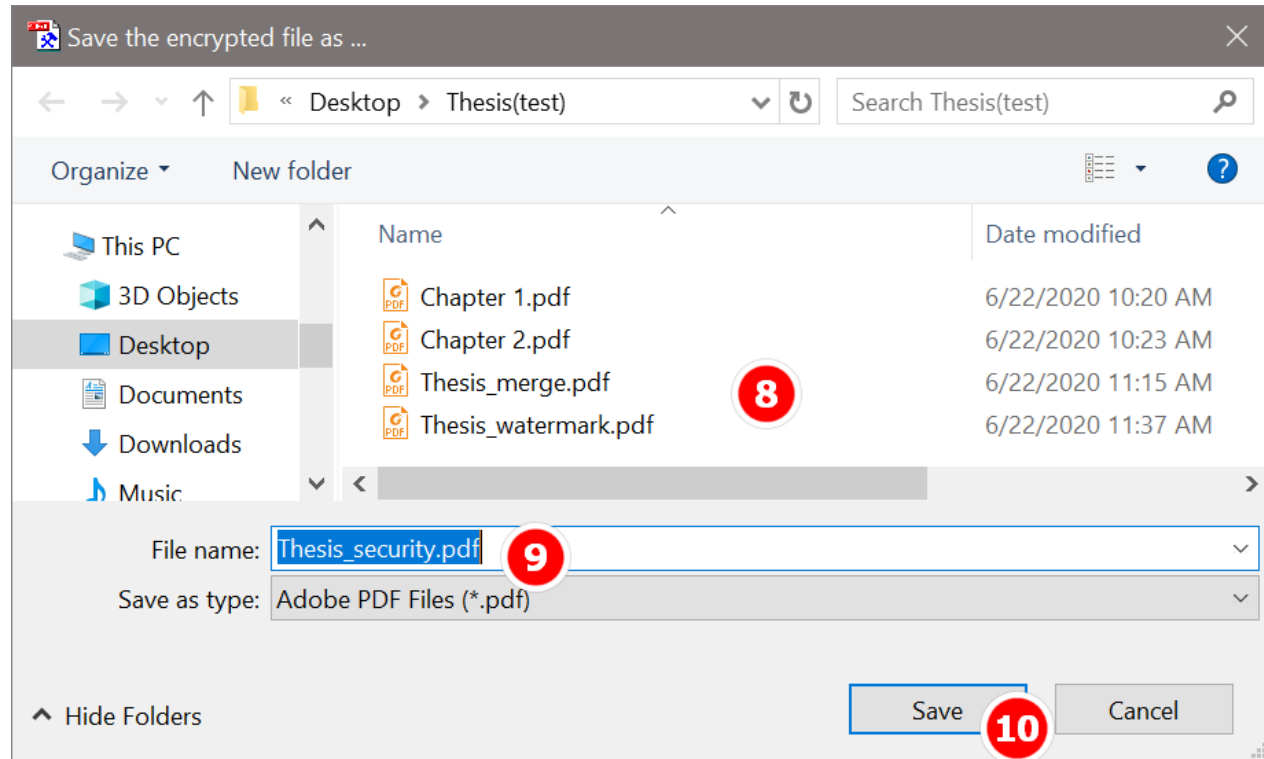
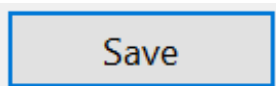


How to set up PDF security -4

8) Choose the destination to save it.

9) Name the file.

10) Click to save the file.





TMUL website

<http://library.tmu.edu.tw>

Library Catalog

<http://elis.tmu.edu.tw>

E-Resources Management System

<http://diglib.tmu.edu.tw/er/eindex.html>

Reference Service Desk

ext. 2515

Place: 2nd Floor of Library

Mail : asktmul@tmu.edu.tw